

MAGNEMOUNT

PRODUCT CATALOGUE

Non-Penetrating Magnetic Antenna & Cable Mounting Systems
for Steel Tanks — Patents #7,624,957 | #9,188,276 | #9,472,937
Last Update: May 2026

A DIVISION OF SCHMIDT INDUSTRIAL SERVICES

About Magnemount

Magnemount is a patented non-penetrating antenna, equipment, and cable mounting system for steel tanks and elevated structures. Permanent ceramic magnets provide exceptional holding power while an independently suspended mounting system allows use on flat, single convex, and double convex curved steel surfaces. All magnets are fully covered with protective pads to safeguard tank paint.

⚠ SURFACE NOTE

Capacities are based on surfaces ≥ 50 ft diameter. Surfaces under 50 ft require tensile and shear testing for structural calculations.

PRODUCT CATEGORIES

Mast Mounts (2)

Side Tank Mounts (4)

MASS Guyed Mounts (3)

Specialty Mounts (1)

Cable & Tray Systems (4)

STRUCTURAL CAPACITY DATA

ASTM A36 plate, .250" min / .013" max paint coating

No safety factor included

24"×24" Plate — Pull	1,100 lbs
24"×24" Plate — Shear	500 lbs
CT1000-24-U-2 — Pull	80 lbs
CT1000-24-U-2 — Shear	40 lbs
CT1000-24-U-4 — Pull	160 lbs
CT1000-24-U-4 — Shear	80 lbs
MMSA-38 — Pull	30 lbs
MMSA-38 — Shear	20 lbs



Model MB

Item No. MB36-2 · Compact fixed mast for steel tank tops

PRICE

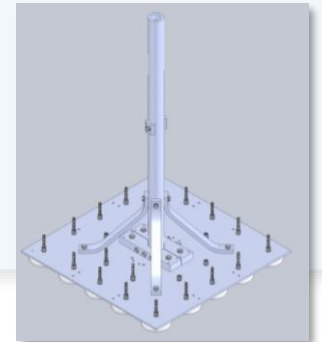
\$3,610.00

SPECIFICATIONS

Item Number	MB36-2
Overturning Moment	600 #ft
Mast Type	Fixed
Footprint	24" × 24"
Mast Size	2" OD × .375"W × 36"L
Clear Mast Space	26" above support
Guyed	Unguyed

FEATURES & NOTES

- Non-penetrating magnetic mount — no drilling required
- Permanent ceramic magnet blend for maximum holding power
- Independently suspended mounting protects tank paint
- Suitable for flat and curved steel surfaces (≥50 ft diameter)
- Ships in no-charge corrugated carton (or \$400 wood crate, up to 6 units)





Model MA

Item No. MA30-2 · Adjustable mast for versatile positioning

PRICE

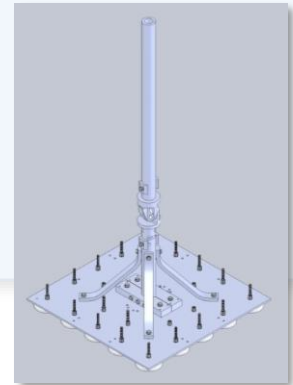
\$4,840.00

SPECIFICATIONS

Item Number	MA30-2
Overturning Moment	600 #ft
Mast Type	Adjustable
Footprint	24" × 24"
Mast Size	2" OD × .375"W × 30"L
Clear Mast Space	28" above support
Guyed	Unguyed

FEATURES & NOTES

- Adjustable mast for flexible antenna positioning
- Non-penetrating magnetic attachment — no tank penetration
- Independent suspension system for convex and curved surfaces
- Permanent ceramic magnets with full paint-protecting pads
- Ships in no-charge corrugated carton (or \$400 wood crate, up to 6 units)





Side Tank Mount — 2-Plate

Item No. STM2 · High-moment side mount for large antennas

PRICE

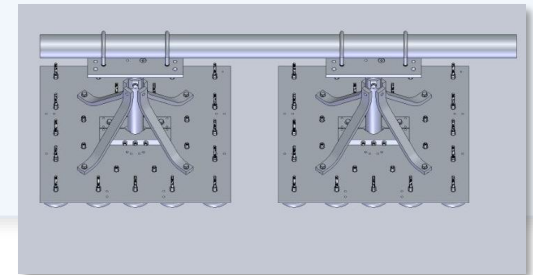
\$7,955.00

SPECIFICATIONS

Item Number	STM2
Overturning Moment	1,200 #ft
Mast Type	Fixed
Plates	2 × 24" × 24"
Mast OD Options	3" or 4.5" OD × .250" wall × 144"L
Mast Material	6061-T6511 clear anodized aluminum (35,000 PSI)
Hardware	4 × ½" 300 SS U-bolts + SS nuts
Plate-to-Top Height	15.5"

FEATURES & NOTES

- Two-plate design doubles capacity over single-plate models
- Accepts both 3" and 4.5" OD masts (4.5" = 4IPS pipe equivalent)
- Premium 6061-T6511 extruded aluminum masts — 35,000 PSI min yield
- Stainless steel hardware throughout for corrosion resistance
- \$400 crate holds up to 4 STM2 units (masts shipped separately)





Side Tank Mount — 3-Plate

Item No. STM3 · Triple-plate side mount for heavy equipment

PRICE

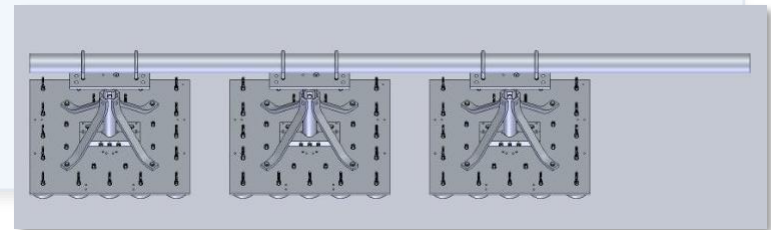
\$11,275.00

SPECIFICATIONS

Item Number	STM3
Overturning Moment	1,800 #ft
Mast Type	Fixed
Plates	3 × 24" × 24" (top, middle, bottom)
Mast OD Options	3" or 4.5" OD × .250" wall × 144"L
Mast Material	6061-T6511 clear anodized aluminum (35,000 PSI)
Hardware	6 × ½" 300 SS U-bolts + SS nuts
Plate-to-Top Height	15.5"

FEATURES & NOTES

- Three-plate configuration for 1,800 #ft overturning moment
- Middle plate adds stability for heavy antenna installations
- Accepts 3" and 4.5" OD masts (4.5" OD = 4IPS pipe equivalent)
- All-aluminum 6061-T6511 masts with 35,000 PSI minimum yield
- \$400 crate holds up to 3 STM3 units (masts shipped separately)





Side Tank Mount — 4-Plate

Item No. STM4 · Maximum-span 4-plate side mount configuration

PRICE

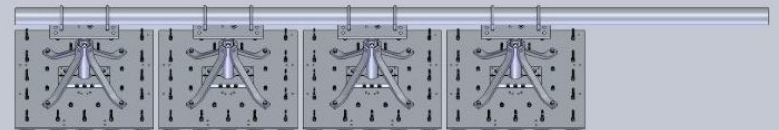
\$14,620.00

SPECIFICATIONS

Item Number	STM4
Overturning Moment	2,400 #ft
Mast Type	Fixed
Plates	4 × 24" × 24" (max separation top-to-bottom)
Mast OD Options	3" or 4.5" OD × .250" wall × 144"L
Mast Material	6061-T6511 clear anodized aluminum (35,000 PSI)
Hardware	8 × ½" 300 SS U-bolts + SS nuts
Plate-to-Top Height	15.5"

FEATURES & NOTES

- Four-plate spread maximizes overturning moment to 2,400 #ft
- Top and bottom plates at maximum possible separation
- Stainless steel U-bolts and hardware for long service life
- Same proven 6061-T6511 aluminum mast system as all STM models
- \$400 crate holds up to 9 STM plates (masts shipped separately)





Side Tank Mount — 5-Plate

Item No. STM5 · Highest-capacity side tank mount in the lineup

PRICE

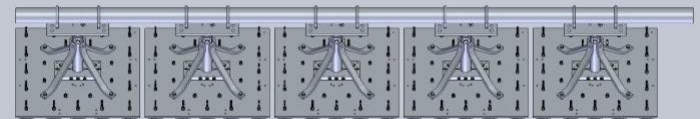
\$17,930.00

SPECIFICATIONS

Item Number	STM5
Overturning Moment	3,000 #ft
Mast Type	Fixed
Plates	5 × 24" × 24" (max spread top-to-bottom)
Mast OD Options	3" or 4.5" OD × .250" wall × 144"L
Mast Material	6061-T6511 clear anodized aluminum (35,000 PSI)
Hardware	10 × ½" 300 SS U-bolts + SS nuts
Plate-to-Top Height	15.5"

FEATURES & NOTES

- Industry-leading 3,000 #ft overturning moment
- Five plates at maximum separation for ultimate stability
- Designed for the most demanding tank-top antenna installations
- Full stainless steel hardware package included
- \$400 crate holds up to 9 STM plates (masts shipped separately)





Model MASS

Item No. MASS48-2 · Wide-footprint guyed mast for elevated installations

PRICE

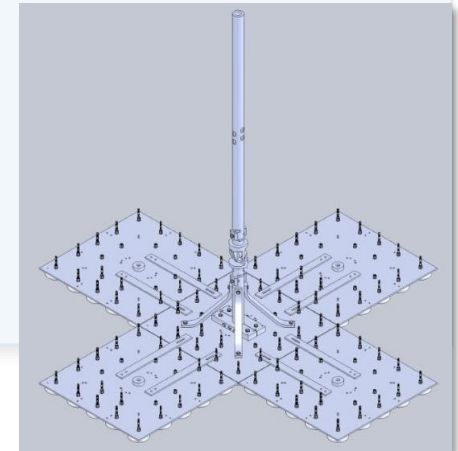
\$15,470.00

SPECIFICATIONS

Item Number	MASS48-2
Overturning Moment	1,650 #ft
Mast Type	Adjustable
Footprint	72" × 72"
Mast Size	2" OD × .375"W × 60"L
Clear Mast Space	23" above support/guys
Guyed	Guyed mast

FEATURES & NOTES

- Large 72" × 72" footprint for superior base stability
- Guyed mast design handles 1,650 #ft overturning moment
- Adjustable mast for on-site height optimization
- Permanent ceramic magnets — fully paint-protecting pads
- \$400 crate holds up to 3 MASS models





Model MASS Cell

Item No. MASSCELL108-2 · Extended mast for cellular antenna height requirements

PRICE

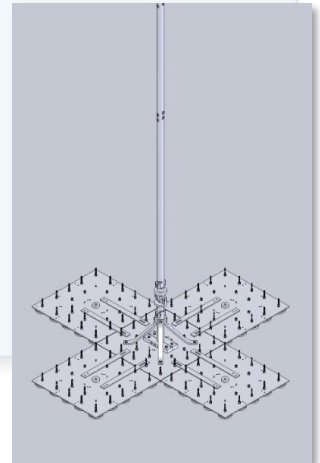
\$15,470.00

SPECIFICATIONS

Item Number	MASSCELL108-2
Overturning Moment	1,650 #ft
Mast Type	Adjustable
Footprint	72" × 72"
Mast Size	2" OD × .375"W × 120"L
Clear Mast Space	70" above support/guys
Guyed	Guyed mast

FEATURES & NOTES

- 120" mast provides 70" of clear usable space above guys
- Designed specifically for cellular antenna height requirements
- Same proven 72" × 72" guyed base as the MASS platform
- Adjustable mast positioning for optimal signal coverage
- \$400 crate holds up to 3 MASS models





Model MASS XL

Item No. MASSXL131-2 · Extra-long guyed mast with maximum clear height

PRICE

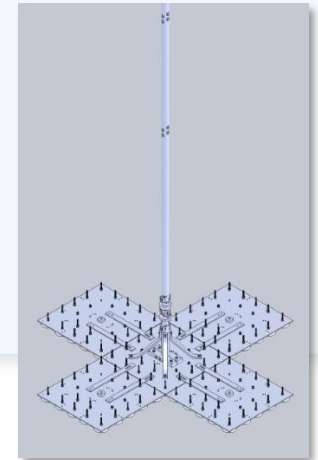
\$15,470.00

SPECIFICATIONS

Item Number	MASSXL131-2
Overturning Moment	1,650 #ft
Mast Type	Adjustable
Footprint	72" × 72"
Mast Size	2" OD × .375"W × 144"L
Clear Mast Space	36" standard / up to 90" modified
Guyed	Guyed mast

FEATURES & NOTES

- 144" mast — longest in the MASS family
- Standard 36" clear height, modifiable up to 90"
- Same 72" × 72" guyed base platform as MASS and MASS Cell
- Ideal for high-elevation antenna or monitoring equipment
- \$400 crate holds up to 3 MASS models





Stability Mount

Item No. STABILMT · Reinforcement anchor for railings and catwalk towers

PRICE

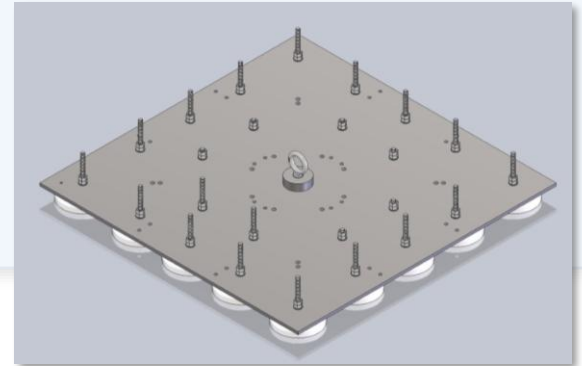
\$2,045.00

SPECIFICATIONS

Item Number	STABILMT
Pull Capacity	1,100 lbs vertical
Shear Capacity	500 lbs
Footprint	24" × 24"
Attachment	304 SS forged eyebolt (center of plate)
Linkable	Yes — link multiple for higher capacity

FEATURES & NOTES

- Purpose-built for stabilizing railings and catwalk towers
- 304 grade stainless steel forged eyebolt for secure attachment
- Units can be linked together for increased capacity
- No-charge corrugated carton on pallet (≤6 units); \$400 crate for 7+
- Same permanent magnet technology as all Magnemount products





Cable Holder

Item No. CT1000-24-U-2 · Lightweight cable and conduit holder — no tray

PRICE

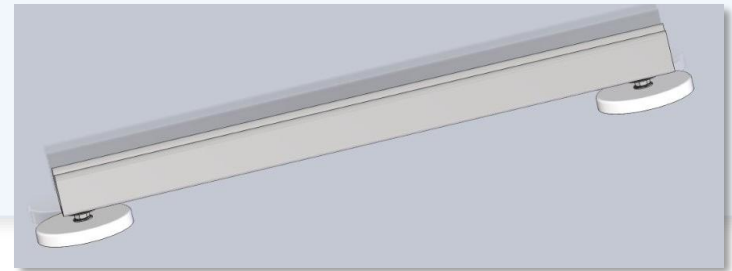
\$200.00

SPECIFICATIONS

Item Number	CT1000-24-U-2
Pull Capacity	80 lbs perpendicular
Shear Capacity	40 lbs
Tray/Cover Capable	No — cable/conduit only
Channel	12 Ga 304 SS Unistrut
Hardware	300 grade SS Unistrut clamps
Spacing (Vertical)	Every 2 ft minimum
Spacing (Horizontal)	Every 3 ft minimum

FEATURES & NOTES

- Use for cable and conduit WITHOUT a tray or cover
- Heavy-duty 12-gauge 304 stainless steel Unistrut channel
- Unistrut clamps for secure, adjustable cable retention
- Stainless steel hardware standard throughout
- Minimum spacing: 2 ft vertical / 3 ft horizontal (per structural engineer recommendations)





Cable/Tray Holder

Item No. CT1000-24-U-4 · Versatile holder for cable, conduit, and tray

PRICE

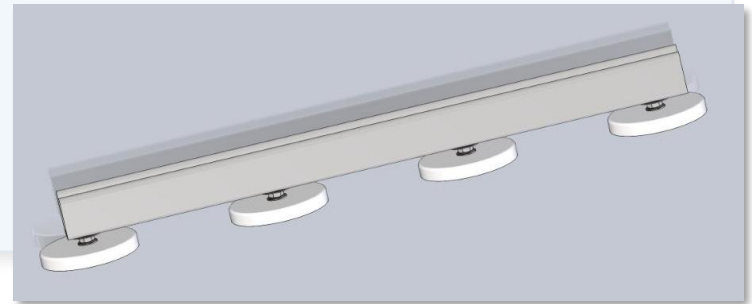
\$290.00

SPECIFICATIONS

Item Number	CT1000-24-U-4
Pull Capacity	160 lbs perpendicular
Shear Capacity	80 lbs
Tray/Cover Capable	Yes — with or without tray
Channel	12 Ga 304 SS Unistrut
Hardware	300 grade SS Unistrut clamps
Spacing (Vertical)	Every 2 ft minimum
Spacing (Horizontal)	Every 3 ft minimum

FEATURES & NOTES

- Suitable for cable, conduit, and cable tray applications
- Double the pull capacity of the CT1000-24-U-2 model
- Heavy-duty 12-gauge 304 SS Unistrut channel construction
- All stainless steel clamps and hardware for corrosion resistance
- Minimum spacing: 2 ft vertical / 3 ft horizontal





Cable/Tray Holder XL

Item No. CT1000-24-U-5 · Highest-capacity cable tray holder in the lineup

PRICE

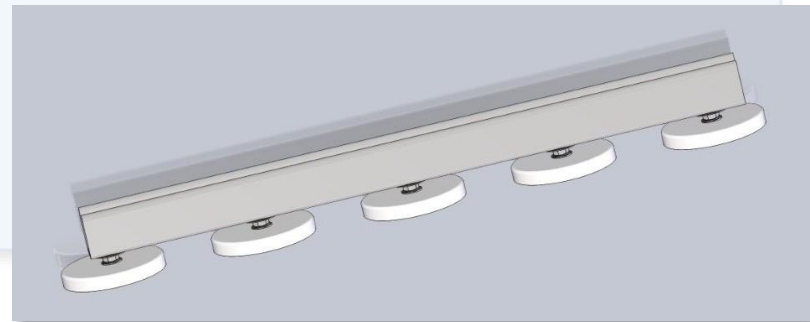
\$335.00

SPECIFICATIONS

Item Number	CT1000-24-U-5
Pull Capacity	200 lbs perpendicular
Shear Capacity	100 lbs
Tray/Cover Capable	Yes — with or without tray
Channel	Custom 12 Ga 304 SS Unistrut
Hardware	300 grade SS Unistrut clamps
Spacing (Vertical)	Every 2 ft minimum
Spacing (Horizontal)	Every 3 ft minimum

FEATURES & NOTES

- Highest cable tray capacity in the Magnemount lineup
- Custom heavy-duty 12-gauge 304 SS Unistrut channel
- Handles cable tray with or without covers at 200 lbs pull
- Full stainless steel hardware for long, maintenance-free service
- Minimum spacing: 2 ft vertical / 3 ft horizontal





SA-38 Cable Holder

Item No. MMSA-38 · Single-cable magnetic holder using Commscope adapter

PRICE

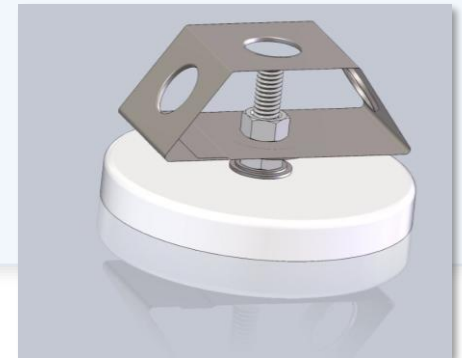
\$60.70

SPECIFICATIONS

Item Number	MMSA-38
Pull Capacity	30 lbs perpendicular
Shear Capacity	20 lbs
Application	Single cable only
Adapter	Commscope SA-38
Spacing (Vertical)	Every 2 ft minimum
Spacing (Horizontal)	Every 3 ft minimum

FEATURES & NOTES

- Single-cable application — most compact cable holder option
- Commscope SA-38 adapter integrated with high-strength magnets
- Patented flexible mounting system absorbs surface irregularities
- Lowest price point in the cable holder lineup
- Minimum spacing: 2 ft vertical / 3 ft horizontal



MAGNEMOUNT

A DIVISION OF SCHMIDT INDUSTRIAL SERVICES

Custom Configurations Available

All designs can be modified to accommodate specialized needs.

Contact Magnemount to discuss your project requirements.

SHIPPING

Standard corrugated carton (no charge)
Wood crate \$400 — fits multiple units

SURFACE REQUIREMENTS

≥50 ft diameter for rated capacity
Smaller surfaces require site testing

CERTIFICATIONS

Patents: #7,624,957 | #9,188,276
#9,472,937